



All controls support 433MHz



### Electronic

Electronic Limit + Built-in Receiver  
+ Fabric of awnings tighten automatically function

R: Радио приемник

- Электронная регулировка концевых положений
- Автоматический контроль натяжения ткани

## DM 35 (45)E/Y

### Electronic Tubular Motor

### Markizy Open/Screens/Zip



## Specification

Version No. : A/04

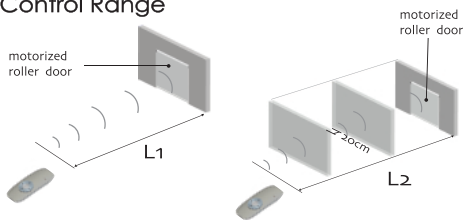
## T Technical Support

1. = × 5  
One channel of emitter can control 20 receivers at most at the same time.
2.   
One Electronic motor maximum can store 20 channels, over 20 channels, if still need add new channels, it will be repeating covered in turn from second channel.

Please set the limit position before use, as the setting method please see **C** 'set up/down limit position' as reference.

Group control programme is noneffective; deleting programme, adding programme and setting limit switch is effective

## Control Range



	L1 Open	L2 Partition	Emission frequency
230V/50Hz	200m	35m	433.92MHz
120V/60Hz	200m	35m	

## T Matchable emitter

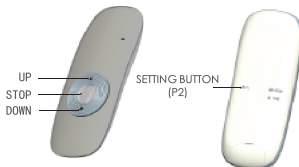
Technical Support

For the emitters without setting button like DC316, you can press Up button and Stop button at the same time to work as the same function as setting button.



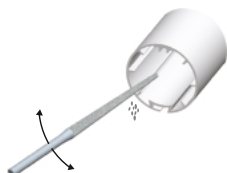
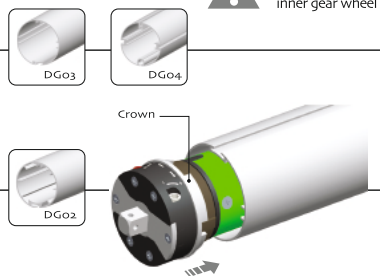
## Button specification

DM35E/Y  
DM45E/Y  
Electronic Limit + Built-in Receiver  
+ Fabric of awnings tighten automatically function

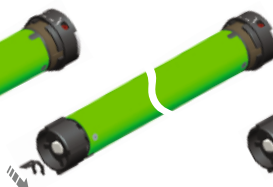
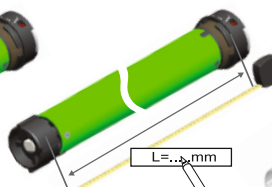
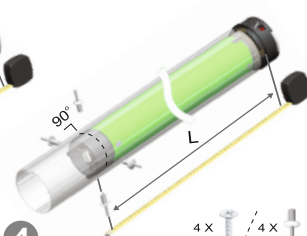


## ! Attention

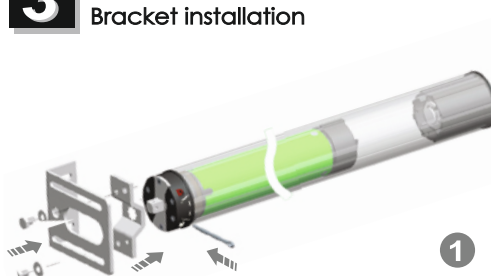
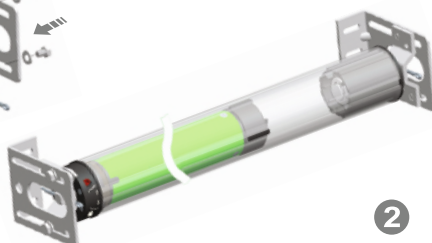
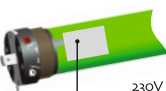


**1****Crown installation****1****2****3**

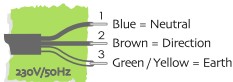
! Forbidden drill through crown and inner gear wheel

**2****Drive adapter installation****1****2****3****4**

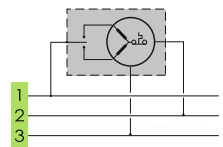
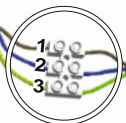
4 X 4 X   
Use rivet or screw to install drive adapter

**3****Bracket installation****1****2****4****Circuit installation**

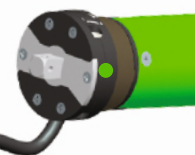
230V / 50Hz or 120V / 60Hz according to product nameplate



AC 1 2 3  
5 X 1.5mm<sup>2</sup> (230V/50Hz)  
5 X 18AWG (120V/60Hz)

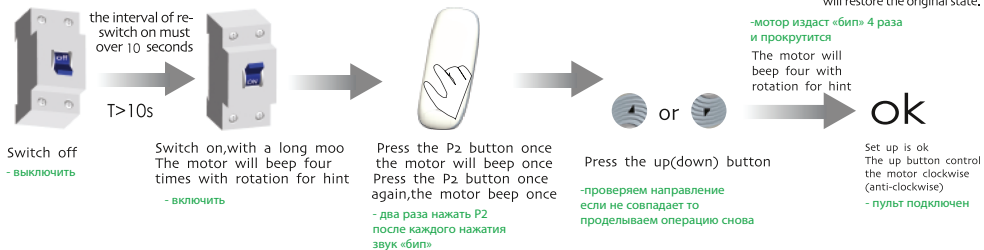


1 2 3



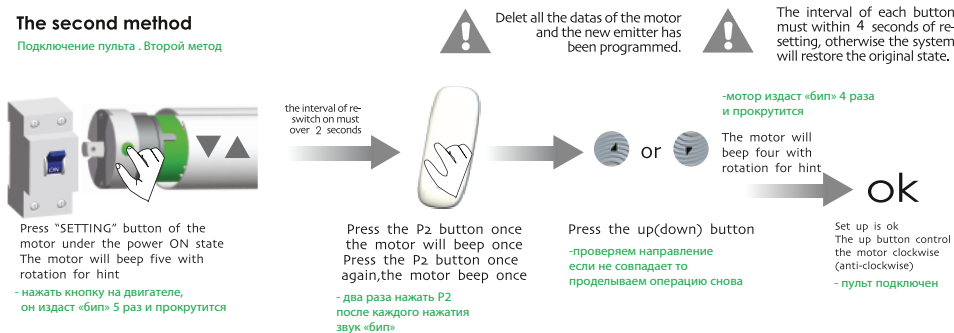
## 5 Setting up The first method

Подключение пульта . Первый метод



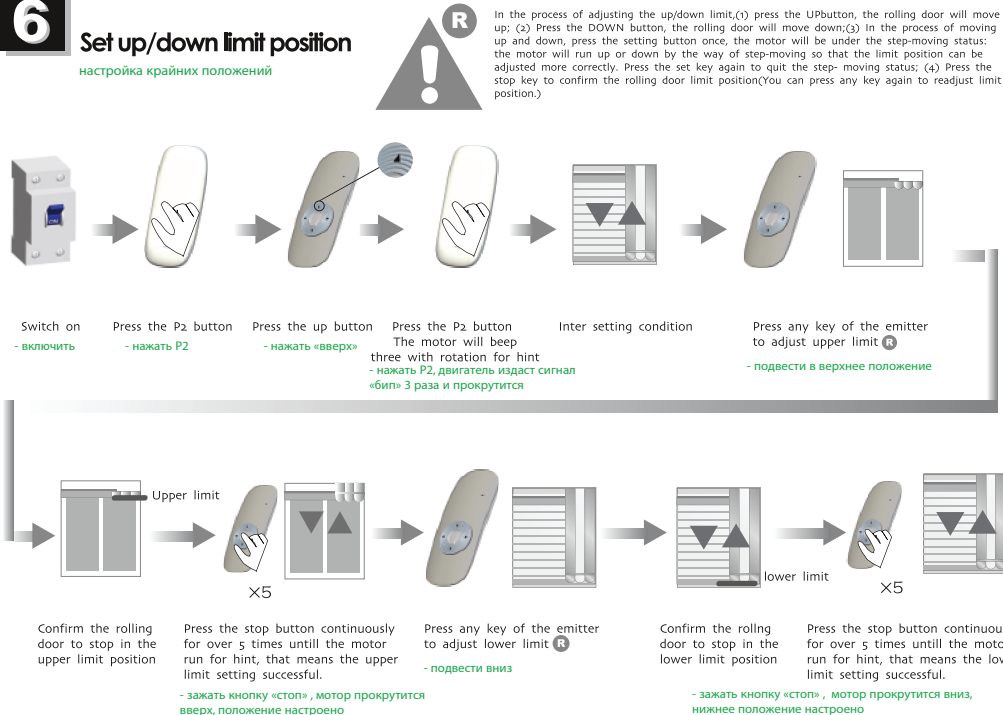
## The second method

Подключение пульта . Второй метод



## 6 Set up/down limit position

настройка крайних положений

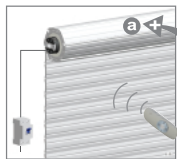


**A**

**Add Emitter**

Additional Function

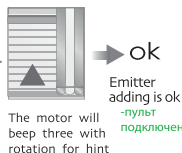
добавление второго пульта



Switch  
-включить

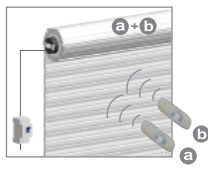
Continue to press "a" emitter's setting button "(P2)" two time  
-на первом пульте нажать P2 два раза

Continue to press "b" emitter's setting button "(P2)" one time  
-на втором пульте нажать P2 один раз



ok  
Emitter adding is ok  
-пульта подключен

The motor will beep three with rotation for hint  
-двигатель издает сигнал «бип» 3 раза и прокрутится



**A**

**Cancel the limit**

Additional Function

удаление крайних точек



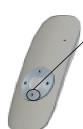
The limit cancellation of DM35E/Yand DM45E/Y



Switch on  
-включить



press setting P2 button one time  
-нажать P2



Press down button one time  
-нажать «вниз»



press setting P2 button one time  
-нажать P2

-двигатель издает сигнал «бип» и прокрутится  
The motor will beep three with rotation for hint



ok  
The limit switch of E/Y Tubular motor has been deleted successfully

-крайние точки удалены

**A**

**Cancel Emitter**

Additional Function

удаление пульта



To cleanup the emitter means deleting all the memory of emitter and limit switch in the E/Y type motor receivers



Switch on  
-включить



press setting P2 button one time  
-нажать P2



Press stop button one time  
-нажать «стоп»

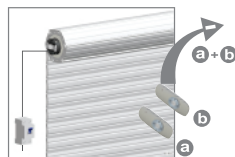


press setting P2 button one time  
-нажать P2



ok  
cancelling is ok  
The motor will beep three with rotation for hint

-мотор издает сигнал «бип» три раза и прокрутится  
-пульта удален



**A**

**The reverse of direction setting**

Additional Function

смена направления движения двигателя



When matching code, you also can use Down button to change direction.



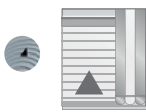
After the reverse of direction setting, the limit setting should set again



Repeat the reverse of direction setting operation, the direction of motor can be reverted in a loop



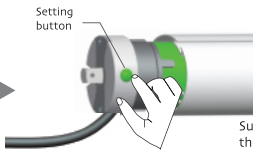
Switch on  
-включить



Press UP button on the emitter, the motor will run upward  
-при нажатии «вверх» изделие сворачивается



Press STOP button on the emitter, the motor will stop  
-нажать «стоп»



Long press "SETTING" button on motor head for about 5 seconds the motor will beep three times and run for hint, relax the button  
-нажать кнопку «setting» двигатель издает «бип» 3 раза и прокрутится



ok  
Successful change the direction  
-направление движения двигателя изменено



Press the UP button on the emitter, the motor will run downward  
-при нажатии «вверх» изделие разворачивается