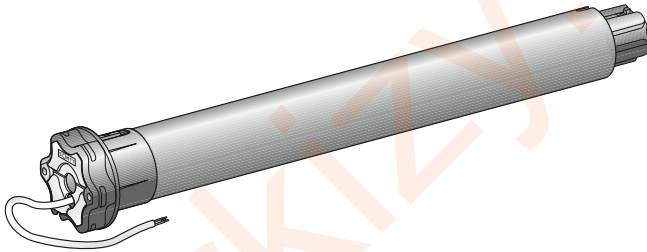


# Sunea io



**EN** Installation guide

Ref. 5063097B



## CONTENTS

<b>1. Introduction</b>	<b>1</b>	<b>6. Use</b>	<b>6</b>
<b>2. Safety</b>	<b>2</b>	6.1. Standard operation	6
2.1. Safety and responsibility	2	6.2. Operation with an Somfy io sensor	6
2.2. Specific safety advice	2	<b>7. Additional settings</b>	<b>7</b>
<b>3. Installation</b>	<b>2</b>	7.1. Favourite position (my)	7
3.1. Motor preparation	2	7.2. Adding/Deleting Somfy io control points and io sensors	7
3.2. Tube preparation	2	7.3. Modifying the end limits	7
3.3. Motor/tube assembly	3	7.4. Advanced functions	8
3.4. Fitting the tube-motor assembly	3	<b>8. Tips and recommendations</b>	<b>9</b>
<b>4. Wiring</b>	<b>3</b>	8.1. Questions about the Sunea io?	9
<b>5. Commissioning</b>	<b>4</b>	8.2. Replacing a lost or broken Somfy io control point	9
5.1. Identifying setting steps already completed	4	8.3. Restoring the original configuration	10
5.2. Pre-programming the Somfy io local control point	4	<b>9. Technical data</b>	<b>10</b>
5.3. Checking the direction rotation of the motor	4		
5.4. Adjusting the end limits	5		
5.5. Programming the first Somfy io local control point	6		
5.6. Checking the settings	6		

## 1. INTRODUCTION

The Sunea io motor is designed for use with all types of awning ( with cassette or non-cassette).

### What is io-homecontrol® ?

The Sunea io uses io-homecontrol®, the new universal and secure wireless communication protocol, shared by worldwide leaders in the world of home equipment.

io-homecontrol® allows all comfort and security equipment to communicate each other and be controlled from a single common control point.

The flexibility and perfect compatibility of the io-homecontrol® system provides support for you as your needs evolve. You can start by automating your shutters and the front door, then equip the outside awnings, the gate and garage door or garden lighting.

Even when fitted at different times, all of this equipment remains compatible with the existing installation thanks to the use of io-homecontrol® technology that guarantees interoperability.

For further information please visit the web site at [www.io-homecontrol.com](http://www.io-homecontrol.com).



io-homecontrol® provides advanced and secure radio technology that is easy to install. io-homecontrol® labelled products communicate with each other, improving comfort, security and energy savings.

[www.io-homecontrol.com](http://www.io-homecontrol.com)

## 2. SAFETY

### 2.1. Safety and responsibility

Before installing and using this product, please read this guide carefully.

This Somfy product must be installed by a professional motorisation and home automation installer, for whom this guide is intended.

Moreover, the installer must comply with current standards and legislation in the country in which the product is being installed, and inform his customers of the operating and maintenance conditions for the product.

Any use outside the sphere of application specified by SOMFY is forbidden. This invalidates the warranty and discharges Somfy of all liability, as does any failure to comply with the instructions given herein.

Never begin installing without first checking the compatibility of this product with the associated equipment and accessories.

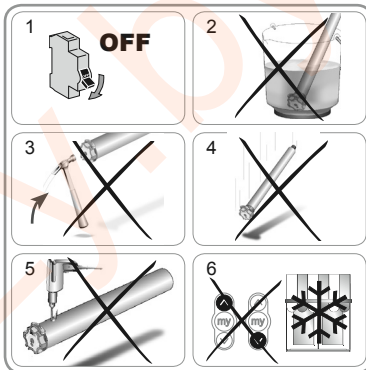
### 2.2. Specific safety advice

As well as the safety instructions in this guide, it is also essential to observe the instructions detailed in the attached document: "Safety advice to follow and keep".

- 1) Cut the power supply off corresponding to the awning before carrying out any maintenance operations around it.

To avoid damages on the product:

- 2) Never immerse it in liquid!
- 3) Avoid impacts!
- 4) Do not drop!
- 5) Never drill holes it!
- 6) Do not move the awning if ice has formed on it.

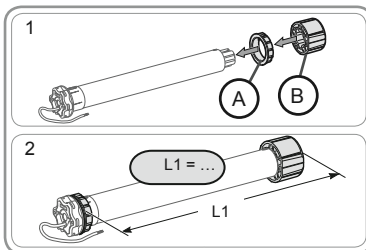


## 3. INSTALLATION

The Sunea io must be installed in a location sheltered from inclement weather.

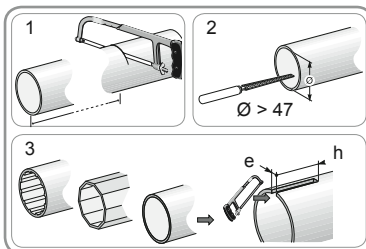
### 3.1. Motor preparation

- 1) Fit the crown (A) and the drive wheel (B) to the motor.
- 2) Measure the length (L1) between the inside of the motor head and the end of the drive wheel.



### 3.2. Tube preparation

- 1) Cut the roller tube to the required length.
- 2) Deburr the roller tube and remove the swarf.
- 3) For smooth roller tubes, cut a notch with the following measurements:
  - e = 4 mm.
  - h = 28 mm.



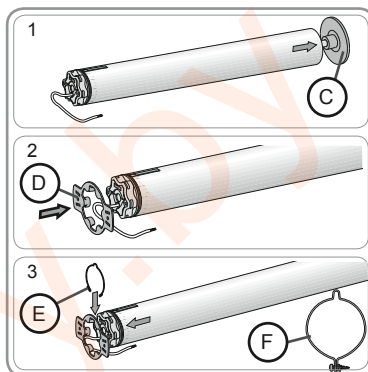
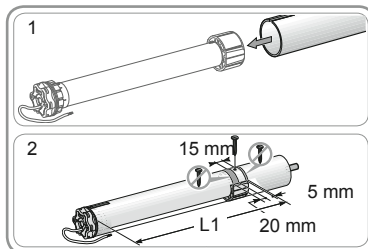
### 3.3. Motor/tube assembly

- Slide the motor into the roller tube. For smooth roller tubes, position the cut notch on the crown.
- For safety reason, fix the roller tube to the drive wheel with 4 self-tapping screws with a diameter of 5 mm or 4 steel pop rivets with a diameter of 4.8 mm located:
  - at least 5 mm from the far end of the drive wheel: L1 - 5, and
  - no more than 15 mm from the far end of the drive wheel: L1 - 15.

**⚠** The screws or pop rivets must only be attached to the drive wheel and not to the motor.

### 3.4. Fitting the tube-motor assembly

- Fit the tube/motor assembly to the end bracket (C).
- Fit the tube/motor assembly to the motor bracket (D).
- Depending on the type of supports fit the stop ring (E) [For the motors  $\geq 85$  Nm absolutely use the locking stop ring (F)].

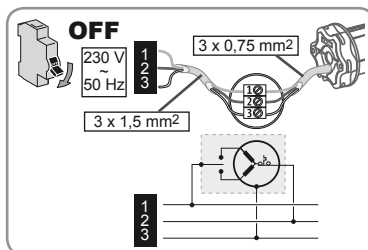
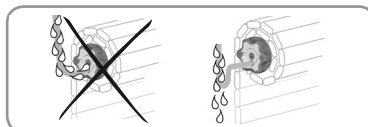


## 4. WIRING

Always make a loop in the power supply cable to prevent water entering the motor!

- Cut the power supply off.
- Connect the motor according to the information in the table below:


	230 V ~ 50 Hz	Motor cable
1	Brown	Live (P)
2	Blue	Neutral (N)
3	Yellow/Green	Earth ( $\perp$ )



## 5. COMMISSIONING

This guide describe only the comisioning using a Somfy io local control point as Situo io. For comisioning using other io control point, refer to the corresponding guide.

### 5.1. Identifying setting steps already completed

 Only one motor can be powered at a time.

Switch the power on and follow process A or B depending on the awning reaction:

#### a) The awning makes a brief movement.

The end limits have been set and no Somfy io control point has been programmed. Go to chapter "Programming the first Somfy io local control point".  
or

#### b) The awning does not move.

Press the Up or Down button and follow process c or d depending on the awning reaction:

#### c) The awning still does not move

The end limits have not been set and no Somfy io control point has been programmed.  
Go to chapter "Pre-programming the Somfy io local control point".  
or

#### d) The awning goes fully up or fully down

The end limits have been set and the Somfy io control point has been programmed.  
Go to chapter "Use".



Programming the first Somfy io local control point



c or d



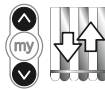
Pre-programming the Somfy io local control point



Use

### 5.2. Pre-programming the Somfy io local control point

- Press the Up and Down buttons simultaneously the awning makes a brief movement, the Somfy io local control point has been pre-programmed in the motor.



### 5.3. Checking the direction rotation of the motor

1) Press the Up button:

- If the awning is raised, the direction of rotation is correct: go to chapter "Setting the end limits".
- If the awning is lowered, the direction of rotation is incorrect: Press the "my" button until the awning makes a movement, the direction of rotation has been modified.

2) Press the Up button to check the direction of rotation.

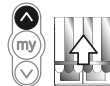
1



Setting the end limits



2




## 5.4. Adjusting the end limits

The end limits are set differently depending on type of awnings.


### 5.4.1. Setting for cassette awning

For cassette awning, the upper end limit is set automatically, while the lower end limit must be set.

#### Setting the lower end limit

 Do not use the “my” and Down buttons at the same time to reach the lower end limit.

1) Set the awning to the lower end limit.

 Press and hold the Down button for > 2 seconds to lower the awning in one continuous movement.

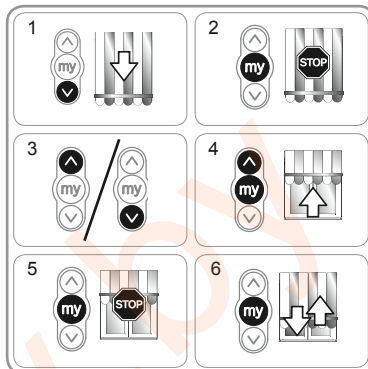
2) Stop the awning in the desired position.

3) If necessary, adjust the position of the awning using the Up or Down buttons.

4) Press the “my” and Up buttons simultaneously: the awning is raised in one continuous movement even after the “my” and Up buttons have been released.

5) At the halfway point, briefly press the “my” button to stop the awning.

6) Press the “my” button again until the awning makes a movement: the end limits have been programmed, go to chapter “Programming the first Somfy io local control point”.




### 5.4.2. Settings for non-cassette awnings

For non-cassette awnings, the upper and lower end limits must be set.

#### Setting the upper end limit

1) Set the awning to the upper end limit.

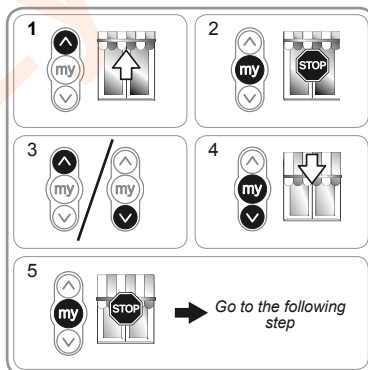
 Press and hold the Up button for > 2 seconds to raise the awning in one continuous movement.

2) Stop the awning in the desired position.

3) If necessary, adjust the position of the awning using the Up or Down buttons.


4) Press the “my” and Down buttons simultaneously: the awning is lowered in one continuous movement even after the “my” and Down buttons have been released.

5) At the halfway point, briefly press the “my” button to stop the awning and go to the following step.



#### Setting the lower end limit

1) Set the awning to the lower end limit.

 Press and hold the Down button for > 2 seconds to lower the awning in one continuous movement.

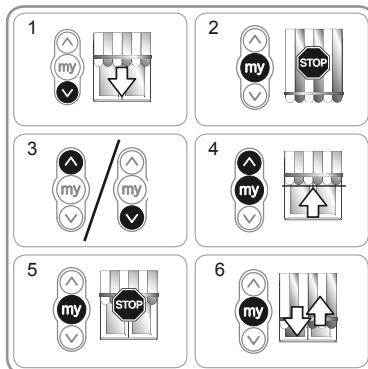
2) Stop the awning in the desired position.

3) If necessary, adjust the position of the awning using the Up or Down buttons.

4) Press the “my” and Up buttons simultaneously: the awning is raised in one continuous movement even after the “my” and Up buttons have been released.

5) At the halfway point, briefly press the “my” button to stop the awning.

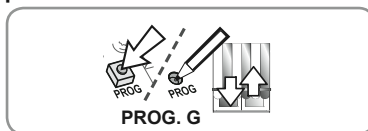
6) Press the “my” button again until the awning makes a movement: the end limits have been programmed. Go to chapter “Programming the first Somfy io local control point”.



## 5.5. Programming the first Somfy io local control point

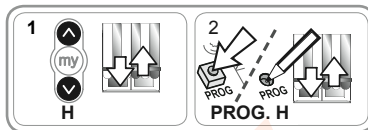
### 5.5.1. Using the pre-programmed Somfy io local control point

- Briefly press the PROG button on this control point (G): the awning makes a brief movement, and the control point has been programmed.



### 5.5.2. After a single power outage

- 1) Press the Up and Down buttons simultaneously on this new control point (H) until the awning makes a movement.
- 2) Briefly press the PROG button on this control point (H): the awning makes a brief movement, and the control point has been programmed.



## 5.6. Checking the settings

- Check the setting of the upper and lower end limits using the Somfy io local control point.

## 6. USE

### 6.1. Standard operation

#### 6.1.1. Favourite position (my)

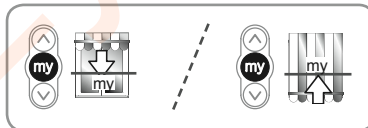
##### Definition

Besides the upper and lower positions, an intermediate position known as the “favourite position (my)” may be programmed in the motor.

**i** To program, modify or delete the favourite position (my), see the chapter “Additional settings” section.

Using the favorite position (my):

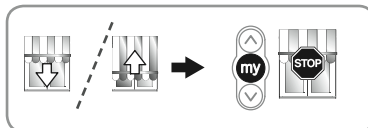
- Briefly press the “my” button: the awning starts moving and stops in the favourite position (my).



#### 6.1.2. STOP function

The awning is moving.

- Briefly press the “my” button: the awning stops automatically..



#### 6.1.3. Up and Down buttons

Briefly press the Up or Down button to raise or lower the awning completely.

**i** for the cassette awnings, the obstacle detection is active throughout the descent.

## 6.2. Operation with an Somfy io sensor

### 6.2.1. Operation with an Somfy io sun sensor (type Sunis WireFree™ io)

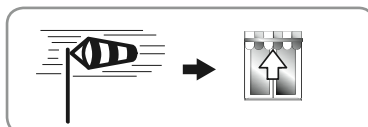
Refer to the corresponding guide.

### 6.2.2. Operation with an Somfy io wind sensor (type Eolis WireFree™ io)

Refer to the Somfy io wind sensor guide for details of its operation.

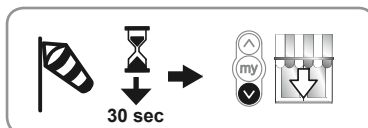
#### Awning's behaviour when the wind rising

**i** When the wind rising, the awning moves to the upper end limit. It is impossible to prevent awning from being raised and lowered when the wind is blowing.



#### Awning's behaviour when the wind dropping

**i** When the wind dropping, a manual lowering command can be sent by the Somfy io control point after 30 seconds. However all automated systems will still remain locked for 11 mins.




### 6.3. Data feedback

After each order, the Sunea io sends a message. The information is managed by the io bi-directional control points.

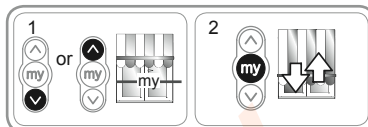
## 7. ADDITIONAL SETTINGS

### 7.1. Favourite position (my)

#### 7.1.1 Setting or modifying the favourite position (my)

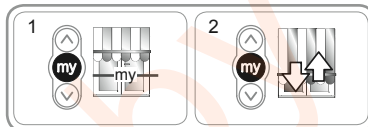
 The procedure for setting or modifying the favourite position (my) is the same.

- 1) Set the awning into the desired favourite position (my).
- 2) Press the “my” button until the awning makes a movement: the favourite position (my) has been programmed..



#### 7.1.2. Deleting the favourite position (my)

- 1) Press the “my” button: the awning starts moving and stops in the favourite position (my).
- 2) Press the “my” button again until the awning makes a movement: the favourite position (my) has been deleted.



### 7.2. Adding/Deleting Somfy io control points and io sensors

Refer to the corresponding guide.

### 7.3. Modifying the end limits

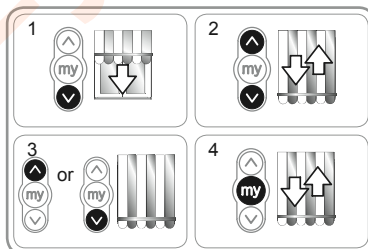
The end limits are modified differently depending on type of awnings.

#### 7.3.1. Modification for cassette awnings

For cassette awnings, the upper end limit is adjusted automatically while the lower end limit can be modified.

##### Readjusting the lower end limit

- 1) Set the awning to the lower end limit.
- 2) Press the Up and Down buttons simultaneously until the awning makes a movement: the motor is in setting mode.
- 3) Adjust the lower position of the awning using the Up or Down button.
- 4) Press the “my” button until the awning makes a movement: the new lower end limit has been programmed.

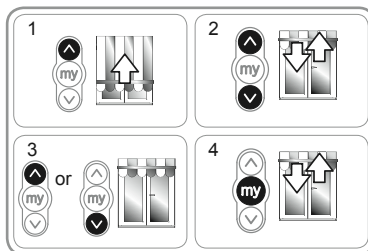


#### 7.3.2. Modification for non-cassette awnings

For non-cassette awnings, the upper and lower end limits can be set.

##### Readjusting the upper end limit

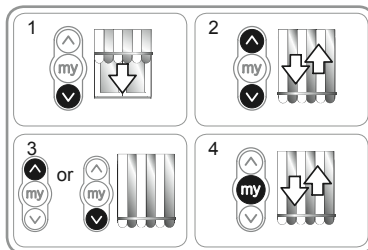
- 1) Set the awning to the upper end limit .
- 2) Press the Up and Down buttons simultaneously until the awning makes a movement: the motor is in setting mode.
- 3) Adjust the upper position of the awning using the Up or Down button.
- 4) Press the “my” button until the awning makes a movement: the new upper end limit has been programmed.





**Readjusting the lower end limit**

- 1) Set the awning to the lower end limit.
- 2) Press the Up and Down buttons simultaneously until the awning makes a movement: the motor is in setting mode.
- 3) Adjust the lower position of the awning using the Up or Down button.
- 4) Press the “my” button until the awning makes a movement: the new lower end limit has been programmed.

**7.4. Advanced functions**

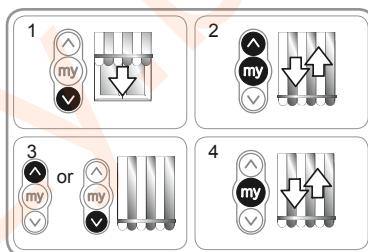
**⚠** Contact the awning’s manufacturer before using these functions to check the compatibility of your systems.

**7.4.1 “Back impulse” function**

This function allows you to tighten the fabric each time the awning is lowered. It is possible to adjust it until ½ turn of roller tube.

To activate this function:

- 1) Set the awning to the lower end limit.
- 2) Press the «my» and Up buttons simultaneously until the awning makes a movement : the motor is in programming mode.
- 3) Adjust the fabric’s tension using the Up or Down buttons (½ turn of tube max).
- 4) Press the “my” button until the awning makes a movement: the fabric’s tension has been programmed.

**7.4.2. “Back release” function on cassette awnings only**

This function allows the fabric tension to be released after the cassette awning is closed.

**i** The procedure for activating and deactivating the “Back release” function is the same.

For safety reasons, this function can only be activated or deactivated by the Somfy io control point in 3 situations:

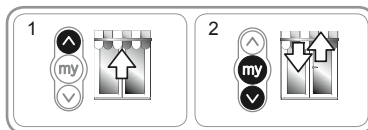
- After the settings confirmation and before programming the first Somfy io control point.
- After programming the first Somfy io control point and during the next 4 cycles.
- After a single power outage and during the next 4 cycles.

To activate this function :

- 1) Set the awning to the upper end limit .
- 2) Press the «my» and Down buttons simultaneously until the awning makes a movement.

If the “Back release” function was inactive, it is activated.

If the “Back release” function was active, it is deactivated.

**7.4.3. “Closing force” function on cassette awnings only**

This function allows the closing force of the awning cassette to be increased or decreased to 3 levels (high/medium/low).

The motor is factory set at the medium level.

For safety reasons, this function can only be accessed via the Somfy io control point in 3 situations:

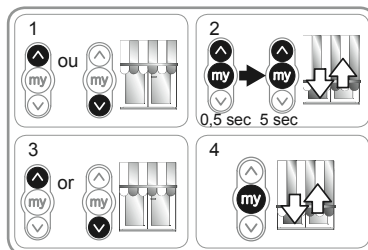
- After the settings confirmation and before programming the first Somfy io control point.
- After programming the first Somfy io control point and during the next 4 cycles.
- After a single power outage and during the next 4 cycles.

To activate this function:

- 1) Set the awning to the halfway position.
- 2) Briefly press the “my” and Up buttons simultaneously , then immediately press and hold simultaneously the “my” and Up buttons until the awning makes a movement.

**⚠ The motor is in programming mode for only 10 seconds.**

- 3) Adjust the closing force using the Up or Down button.
  - To increase the closing force, press the Up button until the awning makes a slow movement: the cassette awning’s closing force has moved up a level.
  - To decrease the closing force, press the Down button until the store makes a slow movement: the cassette awning’s closing force has moved down a level.
- 4) Press the “my” button until the awning makes a movement: The new closing force has been programmed.



## 8. TIPS AND RECOMMENDATIONS

### 8.1. Questions about the Sunea io?

Observations	Possible causes	Solutions
The awning does not work.	The wiring is incorrect.	Check the wiring and modify it if necessary.
	The motor is hot.	Wait until the motor cools down.
	An incorrect cable has been used.	Check the cable and ensure it has 3 leads.
	The Somfy io control point battery is weak.	Check if the battery is weak and replace it if necessary.
	The control point is not compatible.	Check for compatibility and replace the control point if necessary.
The awning stops too soon.	The crown is incorrectly positioned.	Fit the crown correctly.
	The end limits have been incorrectly set.	Readjust the end limits

### 8.2. Replacing a lost or broken Somfy io control point

Refer to the corresponding guide.

### 8.3. Restoring the original configuration

**⚠** This reset deletes all the control points, all the sensors, all the end limits settings and resets the motor's direction of rotation and favourite position (my). However, the advanced functions setting ("Back impulse", "Back release", "Closing force") are kept.

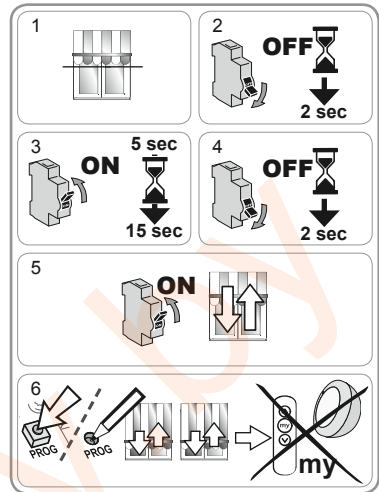
**⚠** Apply the double power cut only for the motor to be reset!

- 1) Set the awning to the halfway position (if possible).
- 2) Cut the power supply off for 2 seconds.
- 3) Switch the power supply back on from 5 to 15 seconds.
- 4) Cut the power supply off for 2 seconds.
- 5) Switch the power supply back on: the awning makes a movement for several seconds.

**ⓘ** If the awning is in the upper or lower end limit position it will make a brief movement.

- 6) Press and hold the PROG button: the awning will make a first movement, and repeat it a few moments later. The motor is configured with the factory settings.

- Repeat the procedures in the chapter "Commissioning".



## 9. TECHNICAL DATA

Radio frequency	868-870 Mhz, io-homecontrol® tri-band bi-directional
Power supply	230 V ~ 50 Hz
Operating temperature	- 20 °C to + 70 °C
Protection rating	IP 44
Maximum number of connected io control points and io sensors	9
Safety level	Category I



# Somfy Worldwide

Argentina:  
Somfy Argentina  
Tel: +55 11 (0) 4737-3700

Australia:  
Somfy PTY LTD  
Tel: +61 (2) 8845 7200

Austria:  
Somfy GesmbH  
Tel: +43 (0) 662 / 62 53 08 - 0

Belgium:  
Somfy Belux  
Tel: +32 (0) 2 712 07 70

Brasil:  
Somfy Brasil Ltda  
Tel: +55 11 3695 3585

Canada:  
Somfy ULC  
Tel: +1 (0) 905 564 6446

China:  
Somfy China Co. Ltd  
Tel: +8621 (0) 6280 9660

Croatia :  
Somfy Predstavništvo  
Tel: +385 (0) 51 502 640

Cyprus :  
Somfy Middle East  
Tel: +357(0) 25 34 55 40

Czech Republic:  
Somfy, spol. s.r.o.  
Tel: (+420) 267 913 076 - 8

Denmark:  
Somfy Nordic Danmark  
Tel: +45 65 32 57 93

Export:  
Somfy Export  
Tel: + 33 (0)4 50 96 70 76  
Tel: + 33 (0)4 50 96 75 53

Finland:  
Somfy Nordic AB Finland  
Tel: +358 (0)9 57 130 230  
Fax: +358 (0)9 57 130 231

France :  
Somfy France  
Tel. : +33 (0) 820 374 374

Germany:  
Somfy GmbH  
Tel: +49 (0) 7472 930 0

Greece:  
SOMFY HELLAS S.A.  
Tel: +30 210 6146768

Hong Kong:  
Somfy Co. Ltd  
Tel: +852 (0) 2523 6339

Hungary :  
Somfy Kft  
Tel: +36 1814 5120

India:  
Somfy India PVT Ltd  
Tel : +91) 11 4165 9176

Indonesia:  
Somfy Jakarta  
Tel: +(62) 21 719 3620

Iran:  
Somfy Iran  
Tel: +98-217-7951036

Italy:  
Somfy Italia s.r.l  
Tel: +39-024847181

Japan:  
SOMFY KK  
Tel: +81 (0)45 481 6800

Jordan:  
Somfy Jordan  
Tel: +962-6-5821615

Kingdom of Saudi Arabia:  
Somfy Saoudi  
Riyadh :  
Tel: +966 1 47 23 020  
Tel: +966 1 47 23 203  
Jeddah :  
Tel: +966 2 69 83 353

Kuwait:  
Somfy Kuwait  
Tel: +965 4348906

Lebanon:  
Somfy Lebanon  
Tel: +961 (0) 1 391 224

Malaysia:  
Somfy Malaysia  
Tel:+60 (0) 3 228 74743

Mexico:  
Somfy Mexico SA de CV  
Tel: 52 (55) 4777 7770

Morocco:  
Somfy Maroc  
Tel: +212-22443500

Netherlands:  
Somfy BV  
Tel: +31 (0) 23 55 44 900

Norway:  
Somfy Nordic Norge  
Tel: +47 41 57 66 39

Poland:  
Somfy SP Z.O.O.  
Tel: +48 (22) 50 95 300

Portugal:  
Somfy Portugal  
Tel. +351 229 396 840

Romania:  
Somfy SRL  
Tel.: +40 - (0)368 - 444 081

Russia:  
Somfy LLC.  
Tel: +7 495 781 47 72

Serbia:  
SOMFY Predstavništvo  
Tel: 00381 (0)25 841 510

Singapore:  
Somfy PTE Ltd  
Tel: +65 (0) 6383 3855

Slovak republic:  
Somfy, spol. s r.o.  
Tel: +421 337 718 638  
Tel: +421 905 455 259

South Korea:  
Somfy JOO  
Tel: +82 (0) 31 600 5250

Spain:  
Somfy Espana SA  
Tel: +34 (0) 934 800 900

Sweden:  
Somfy Nordic AB  
Tel: +46 (0)40 16 59 00

Switzerland: Somfy A.G. -  
Tel: +41 (0) 44 838 40 30

Syria: Somfy Syria  
Tel: +963-9-55580700

Taiwan:  
Somfy Development and  
Taiwan Branch  
Tel: +886 (0) 2 8509 8934

Thailand:  
Bangkok Regional Office  
Tel: +66 (0) 2714 3170

Tunisia:  
Somfy Tunisia  
Tel: +216-98303603

Turkey:  
Somfy TurkeyMah.,  
Tel: +90 (0) 216 651 30 15

United Arab Emirates:  
Somfy Gulf Jebel Ali Free Zone  
Tel: +971 (0) 4 88 32 808

United Kingdom:  
Somfy Limited  
Tel: +44 (0) 113 391 3030

United States:  
Somfy Systems  
Tel: +1 (0) 609 395 1300